

EN

OPTIMUM[®]

MASCHINEN - GERMANY

METAL WORKING MACHINERY

THE OPTIMUM IN TERMS OF QUALITY,

PRICE-PERFORMANCE AND SERVICE



MAIN CATALOGUE 2019

The OPTIMUM in terms of quality,
price-performance and service



Sales and service Germany in Hallstadt/Bamberg

Dear Customer,

To support any conceivable metalworking application, we have composed an assortment in our OPTIMUM domain catalogue that covers many areas with suitable machines. Each of our products impresses with its quality, precision, long service life and value stability. OPTIMUM offers the right machine for most tasks - from bench-top drills to CNC lathes.

OPTIMUM has built up a good reputation in the course of the years on what is a continually changing and developing tool and machine market. We are proud to say that we combine expertise, experience and a balanced price-performance ratio. Our utmost priority is you as a satisfied customer. With our motivated and expert personnel we strive to complete OPTIMUM's know-how and propagate it to you our customers.

Your requirements are our target

For more than 25 years, we have focused on the design, development and production of OPTIMUM machines, and for more than 10 years on CNC machines. We work unceasingly on continually optimising our machines. One important point here is also production, which is of great importance to us. This is why we made a careful choice of manufacturers to supplement our own production facilities. We set great store by the fact that these manufacturers meet our internal quality requirements. Besides our own manufacturing operations, OPTIMUM exclusively relies on manufacturers who meet our requirements. This means that we can offer you metalworking machines that impress on many scores.



Kilian Stürmer
Managing Directors



DISCOVER OUR PRODUCT VIDEOS NOW!

All of our product videos are available for you to watch on our YouTube channel **OPTIMUM Maschinen Germany GmbH**.
Subscribe to our YouTube channel, to avoid missing any of the new videos.





sales service. And, of course, our expert staff is there to help you at any time. Please don't hesitate to contact our qualified team if you have any questions. We are happy to help.

machine and sheet metal working programme and are guaranteed to have the right machine variant for your needs in our assortment. You can rely on OPTIMUM, because we can realise every single one of your requirements in the metalworking environment. This main catalogue will give you an impression of our capabilities and our wide product portfolio.

[illegible]

All OPTIMUM products are produced under high quality requirements.



OPTIMUM plant in Yangzhou, China

Production

Since 2003, OPTIMUM Maschinen Germany GmbH has produced a large share of its metalworking machines in its own factory in Yangzhou China. The quality here is monitored by German quality management officers and production supervisors. A further major part of our OPTIMUM metalworking machines is exclusively produced for OPTIMUM in line with special requirements within the company group.



Production on our own CNC machines



Drilling machine assembly



Quality

OPTIMUM products are produced under high quality requirements. A price comparison with equivalent and comparable products will give you the assurance that our OPTIMUM machines are always products that stand up to any comparison in terms of operating convenience, equipment level, quality, technology and value for money and are thus always a good buy. Check out the robust design and durability for yourself; this is what our machines stand for in a metalworking world.

You can purchase the OPTIMUM brand with confidence, and assure the best possible quality for your operations. There are many products that look identical, or similar, on the market, but which by no means achieve our OPTIMUM quality standards.



Lathe production



Metal-cutting band saw production

German Quality – made in China



Our production facilities

Optimum Maschinen Germany GmbH has commenced production in 2006 in Touqiao Town near Yangzhou in Jiangsu Province, only about three hours by car from Shanghai, on a total area of 20 000 square meters - a building floor space of 9 000 square meters with 180 employees, including 40 technicians.

Today, we produce our Optimum machine program in three production plants with a total area of 74 000 square meters and a building floor space of 30 000 m² with about 230 employees in production.

We permanently meet requirements for precision machining and economic efficiency.

We develop and configure the best solutions for our customers and take responsibility for them.

Our factories carry out strict technical process and quality controls Based on ISO 9001.

With a team of experienced experts and technicians and advanced production facilities, we produce quality products such as small and medium CNC machining centres, CNC lathes, CNC milling machines, milling and drilling machines and lathes for industrial and home use.



DIN EN ISO 9001 Excellent quality

Our factory is DIN EN ISO 9001 certified. This means that all company departments and services are subject to strict quality requirements. And this means consistently high quality for you. The objective of high quality is thrilled customers. And it is this attitude that finally helps to achieve this

demanding certification. The key to the long-term success of our enterprise is also a relationship of trust with customers and suppliers. This explains why it is just as important to us as the sustainable quality of our products.





Our standards are high. And we strictly adhere to them

Certified quality in our production facilities

The excellence and safety of our products are assured by a system of internal processes, based on regular and frequent inspections in our factories and along the logistics chain. In order to ensure compliance with the strict requirements, each production site is regularly inspected.

Achieving our quality goals is an important management task



At Optimum, development and production are in the same hands, and the company sets high standards in all areas.

This is why our customers get what they expect from Optimum: innovative, well thought-out products with high practical suitability and an exceptionally long service life.

Quality control



Our company has developed a carefully planned quality management system and is certified according to ISO 9001:2008.

This system is an integral part of our operations and no exceptions or compromises are made or entered into with regard to the quality level of the products from production. Our Quality Assurance department is staffed by skilled employees who ensure that only products of impeccable quality are sold

Quality Assurance department

The Quality Assurance department consists of experienced technicians who are supervised by our German technicians, and attach great importance to high quality and impeccable product quality.

Each production step is checked and compared at all times with the available specifications



We want satisfied customers



This explains why our products' compliance with the customer quality requirements described earlier on is our company's top priority.



Production support

Our Engineering department has a well-coordinated team of specialists with excellent engineering qualifications. Their established expertise allows flexible and creative implementation of all requirements posed for our products and services.

A team of employees directly influences the production process on site through regular training and checks. It is only through this intensive support at the production site that we are in a position to achieve the proverbial OPTIMUM.





Quality management Production Outbound goods inspection

In addition to adherence to delivery deadlines and service, the quality of our products is extremely important to us. Continuous on-site checks by our quality manager ensure our quality. Our comprehensive incoming goods inspection is performed in line with generally accepted technical guidelines.



Quality management Incoming goods inspection

Our quality managers from Germany are our first contacts for quality compliance on site. They are responsible for the dimensional accuracy of the components, for monitoring and quality assurance of the manufacturing process; they collaborate closely with our Engineering department at head office in Germany, thus ensuring an optimal symbiosis.



Planning

As early as the planning phase our engineering department manages the development of new products, which are manufactured both at our facility and at facilities operated by our partners. Major benefits: this ensures that market factors and customer requirements are immediately adopted into our workflow, setting the stage for a successful product design.



Development

Development relies exclusively on state-of-the-art 3D CAD software, which we use to create a virtual model of the machine. Besides ensuring optimum functionality of the machines, our development process also targets re-usability of the data generated during the development phase. These data are not only used for devising production documents and manuals, but are also used for computations, for computer-aided manufacturing, and for visualisation and animations.



Practical testing

Our engineers combine theory and practice. To avoid leaving anything to chance in terms of product satisfaction, all of our machines and tools go through application engineering tests, and we also consistently involve selected customers in this process. This means that each new product is expected to prove itself in the daily grind before it comes as a fixed part of our product range. Engineering analysis helps us to discover and eliminate any remaining weak points.

The clearly engineering oriented approach of our staff – in addition to the premium quality of our products, and our expert service – contribute towards constantly high levels of customer satisfaction. And our focus on technically affine employees ensures our market success – today and looking forward!



Technical customer support

Our customers rightly expect our specialists to use their knowledge and experience to their utmost satisfaction. Our product consultants support users with technical information. To allow this to happen, our customers can use our free telephone hotline and our info email address to request qualified information and solutions at short notice.



Safeguarding copyrights

To secure the rewards of our technical development work for both ourselves and our customers, patent and utility model protection is essential for our in-house developments. This helps us permanently keep the technical lead that OPTIMUM products have. The entire catalogue is protected by copyright. Additionally, to protect our products, we register our rights to our brands, patents and designs where possible in each individual case. We take strong action against any violation of our intellectual property.



Technical documentation and risk analyses

Our technical authors again achieve a high standardised level that meets or even exceeds all requirements. These huge efforts exclusively serve the purpose of facilitating the process of familiarisation with the machine for our customers, and ensuring permanent and safe operations. Risk mitigation measures are developed to compensate for any safety risks identified in the scope of analysis. Following this, the residual risk is evaluated after implementing the measures.



Supplier management

Regular work meetings between our engineers and suppliers help to transfer our new developments and enhancements into series production at the manufacturing location in a targeted way. This direct support at our production facilities has been indispensable in manufacturing the quality products that our customers have trusted for more than 25 years.



Sales support

The requirements for OPTIMUM machines are equally as diverse as the production requirements of our end customers and the workpieces to be machined. To ensure this, our representatives and retailers have access to the entire application-specific know-how of our engineers in case of queries.

In a qualified and explanatory sales talk, our customers are given the support they need to tune their choice of products to match their needs.



Training

For employees from Engineering, Service and Sales as well as for our customers: Successful use of our products depends and is driven to a decisive extent by the fact that we pass on our technology know-how to our dealers, their sales and service staff and our customers through training sessions. The major benefits: this qualification offers the ability to ensure professionally founded consultancy and problem solving in all dealings with the customer. At our training centre, we offer practically-oriented product training that aim to disseminate professional knowledge in a highly intuitive way.



Supply of spare parts

We know that rapid availability of spare parts is one of the major pre-conditions for a working, customer-oriented service solution. The planning, coordination and provisioning of spare parts is tuned at OPTIMUM Maschinen Germany GmbH so that our customers have the greatest possible benefits in terms of economic efficiency and speed.



Siemens cooperation partner for CNC training

Siemens has for many years been the system supplier of the control and drive technology for CNC-controlled lathes and milling machines by OPTIMUM Maschinen Germany GmbH. Due to our long-standing and successful collaboration, a cooperation partnership for CNC training in Bavaria was agreed in June 2012. Target-group specific courses familiarise the participants of the training program with the various Sinumerik controls.



Service support

...after all, good service is important to us!

In service cases, our OPTIMUM technicians are available at any time with their experience to support your workshop operations and ensure fast and targeted repairs.

In close cooperation with the service centre and its internal and external staff, weaknesses are analysed and customer needs registered. These weaknesses and needs are then evaluated from an engineering point of view and set out as tangible requirements or action catalogues.

Table of contents

Drilling machines

DH 55G.....	18
B 50GSM.....	20
DH 45G / DH 45V	22
DH 35G.....	24
B 40GSP / B 40GSM	26
DH 28GSV / DH 32GSV.....	28
DH 26GT / DH 28GS / DH 32GS	30
DH 40CT	32
DH 40G / DH 40GP	34
DH 24BV / DH 28BV / DH 40BV	36
B 24HV / B 28HV / B 34HV	38
DH 18V	40
B 16H / B 24H / B 28H / B 34H	42
DX 17V	44
DX 13V / DX 15V	46
D 17Pro / D 23Pro / D 26Pro / D 33Pro.....	48
RB 6T / RB 8S	50
B 13 / B 14 / B 16 / B 20 / B 25 / B 32	52
RD 4 / RD 5 / RD 6	54
RD 3	56

Accessories - Drilling

Compatibility overview accessories.....	58
Accessories - Drilling.....	60
Therm드릴	68

Magnetic drilling machines

DM 60V / DM 98V.....	70
DM 50PM	72
DM 36VT.....	73
DM 35 / DM 50 / DM 35PF.....	74
DM 35V / DM 50V.....	76
DM 38VF.....	77

Milling machines

MZ 2 / MZ 4.....	80
MT 8	82
MT 230S.....	84
MT 200	86
MT 130S.....	88
MT 100	90
MF 2V / MF 4V	92
MF 2-B / MF 4-B.....	94
MT 60.....	96
MT 50	98
MT 50E.....	100
MB 4P / MB 4PV.....	102
MH 50G / MH 50V	104
MH 35G / MH 35V	106
MB 4	108
MH 25V / MH 25SV	110
MH 20V / MH 22V / MH 22VD.....	112
BF 16 Vario.....	114

Accessories - Milling

Compatibility overview vises.....	116
Accessories - vises.....	117
Compatibility overview accessories.....	120
Accessories for milling machines	122
Machine bases milling machines	131
Starter set.....	133

Lathes

TH 8020D / TH 8030D	138
TH 6620D / TH 6630D	140
TX 5216 / TX 6222	142
TZ 4 / TZ 4V	144
TH 5620V	146
TH 5615D / TH 5620D / TH 5630D.....	148
TH 4615V	150
TH 4610D / TH 4615D / TH 4620D.....	152

TH 4210V	154
TH 4210 / TH 4210D / TH 4215D	156
TH 4010 / TH 4010D / TH 4010V	158
TM 4010 / TM 4010D	160
TH 3610 / TH 3610D.....	162
TH 3309 / TH 3309D / TH 3309V	164
TU 3008 / TU 3008G / TU 3008V	166
TU 2807 / TU 2807V	168
TU 2506 / TU 2506V.....	170
TU 2406 / TU 2406V	172
TU 2304 / TU 2304V	174
TU 2004V	176
TU 1503V.....	177

Accessories - Turning

Compatibility overview accessories.....	178
Accessories Turning	180

Metal-cutting bandsaws

Metal-cutting circular saws

CS 275 / CS 315.....	196
SD 350AV.....	198
S 350DG	200
S 300DG / S 300DG Vario	202
S 310DG Vario	203
SD 280V	204
S 285DG	205
S 275N / S 275NV	206
S 210G	207
S 181	208
S 181G	209
S 150G Vario	210
S 131GH.....	211
S 100G	212
SP 11V / SP 13V.....	213

Sawing - Accessories

Material stand MSR.....	214
Length measuring system LMS.....	215

Grinding/Polishing machines

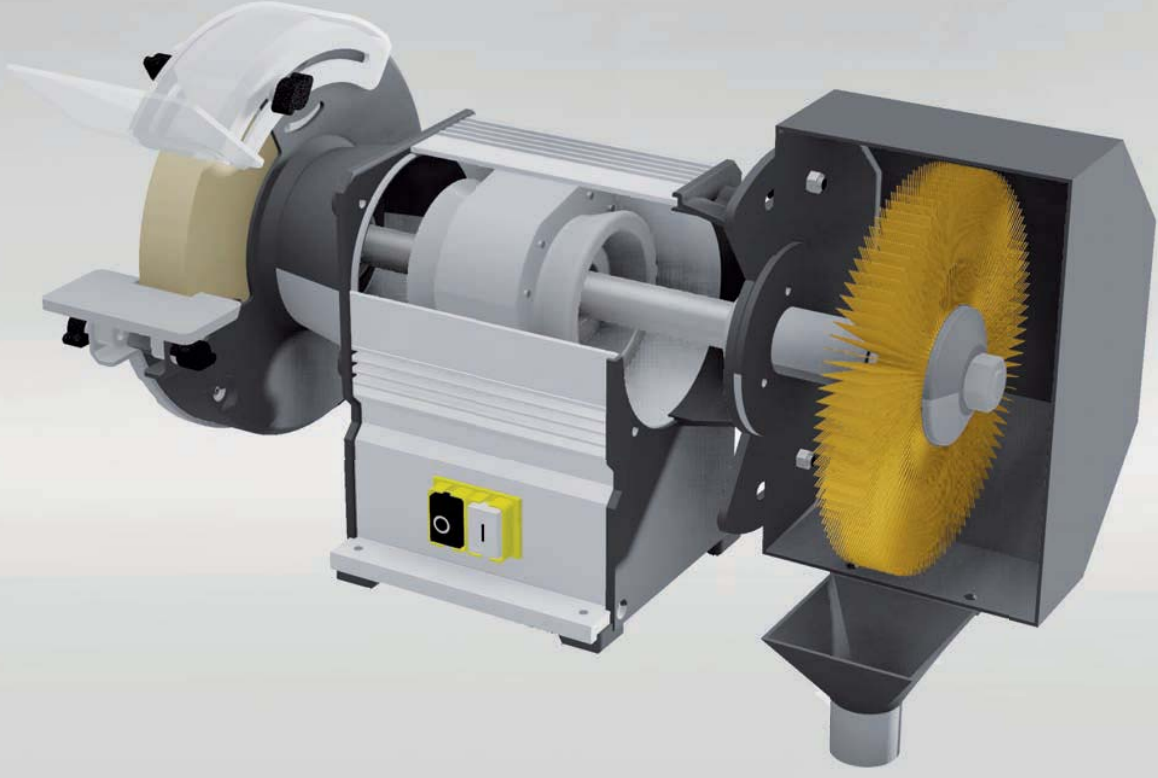
Drilling/sanding machine GH 20T.....	218
Drill bit grinding machines GH 10T / GH 15T	219
Drilling/sanding machine DG 20.....	220
Drilling/sanding machine GQ-D13	221
Bench grinders GZ 20D - GZ 30DD	222
Bench grinders GU 15 - GU 25, SM 300	223
Vario drive for grinders	224
Combined grinding machines GZ 20C - GZ 25CD	226
Polishing machines GU 20P / GU 25P.....	227
Combined grinding machines GU 15B - GU 25B.....	228
Universal grinding machines GU 20S / GU 25S.....	229
Machine bases grinding machines	230
Belt sanders BSM 75 / BSM 150	232
Belt and disc sander DBS 75	233
Disk grinder TS 305	234

Plate rolling, folding, pressing

Folding machine FP 3	236
Three-roll bending machine BM 3	236
Metal processing SAR 1000.....	237
Lever tin snips PS 125 - PS 300	238
Arbor presses DDP 10 - DDP 50	238

Machine accessories

Machine lamps	240
Coolant accessories	242
Digital position display Newall DP 700	244
Digital position display DPA 21 / DPA 22	247
Digital position display DRO 5	248
Dial gauges/Gauge stand/Spirit level/Test plate	248



GRINDING AND POLISHING MACHINES

Versatile graver and tool grinding machine for various tool geometries

Facts that impress in terms of quality, performance and price

- Universally deployable thanks to versatile pivoting and adjustment options
- Many pivoting and adjustment options for creating gravers (cylindrical, centric, tapered)
- For grinding stamps, twist drills, electrodes, lathe tools, centres, etc.
- High level of precision thanks to rugged machine body and vibration-free driven precision grinding spindle
- Easy handling and operation
- Indexing head with 24 latching positions
- Adjustable dressing device



Follow this for the video presentation of our drill bit grinding machine GH 20T
Subscribe to our YouTube channel, to avoid missing any of the new videos:
www.youtube.com/user/OptimumMaschinen

Model	GH20T
Article no.	3100125
Technical data	
Electrical connection	400 V/3 Ph ~50Hz
Motor output	370 W
Speeds	
Grinding disc speed, diamond	5 000 rpm
Grinding speed	max. 35 m/s
Motor speed	2 750 rpm
Travel	
Tool holder travel	140 mm
Tool holder fine adjustment	18 mm
Longitudinal fine adjustment	6 mm
Adjustable angle	
vertical/rear side	0° - 40°
horizontal/conical grinding	0° - 180°
Negative angles	0° - 52°
Latching setting angle of rotation	22° x 15° 180°
Collet chuck holder	
Clamping range	Ø 1- 12 mm
Clamping jaw type	385E (5C), DIN 6341
Dimensions	
Length x width x height	350 x 450 x 340 mm
Weight	45 kg

* Two latching positions occupied for sharpening drill bits

Replacement grinding disc	Grain size	Applications	Article no.
Corundum	K 80	Fast-working steel (HSS)	3100128
Diamond	K 150	Carbide	3100129

Comprehensive scope of delivery



- Spring collets 385E (5C) DIN 6341
Ø 37.5 mm; L=89 mm; 20°
- Sizes Ø 4/6/8/10/12 mm



- Corundum cup grinding disc
Ø 100 x 51 x Ø 20 mm
- Diamond cup grinding disc
Ø 100 x 51 x Ø 20 mm
(pre-assembled in as-delivered condition)



- Device for sharpening lathe tools



- Device for sharpening end mills



- Device for sharpening twist drill bits



- Operating tool



Fig.: Corundum Fig.: Diamond

The handy drill bit grinding device - ideal for grinding twist drill bits

Facts that impress in terms of quality, performance and price

- Easy to operate for precise and inexpensive grinding of twist drill bits with two cutting edges
- Drill bit grinding without prior experience - clean, fast and precise
- Easy to transport
- Diamond grinding stone with long service life for the perfect grind
- Fully equipped with ER spring collets in the machine interior



Fig.: GH10T



Follow this for the video presentation of our drill bit grinding machine GH 15T
Subscribe to our YouTube channel, to avoid missing any of the new videos:
www.youtube.com/user/OptimumMaschinen

Model	GH10T	GH 15T
Article no.	3100110	3100115
Technical specifications		
Electrical connection	230 V/1 Ph ~50 Hz	230 V/1 Ph ~50 Hz
Motor output	180 W	450 W
Technical specifications		
Grinding wheel	Steel disc, coated with Cubic crystallineboron nitride	
Collet chuck holder	ER20 DIN 6499	ER20 / ER 40 DIN 6499
Speed (continuously variable)	5 300 rpm	5 000 rpm
Tip sharpening angle	900 - 1350	900 - 1450
Grinding capacity drill bits	Ø 3 mm to Ø 13 mm	Ø 3 mm to Ø 30 mm
Dimensions		
Length x width x height	310 x 180 x 190 mm	450 x 240 x 270 mm
Weight	9.5 kg	33 kg

Drill bit ...



► ... with blunt cutting edges



► ... ground and tip sharpened

Comprehensive scope of delivery with complete assortment of spring collets



GH10T

- 11 pcs. spring collets ER 20
sizes Ø 2 to Ø 13 mm



GH 15T

- 6 pcs. spring collets ER 20
sizes Ø 3 to Ø 8 mm
- 22 pcs. spring collets ER 40
sizes Ø 8 to Ø 30 mm

Accessories	Article no.
for GH10T	
Replacement grinding disc Crystalline cubic boron nitride Grain size: 170 - 200 Applications: High-speed steel (HSS)	3100126
Replacement grinding disc Diamond Grain size: 150 Applications: carbides	3100131
for GH15T	
Replacement grinding disc Crystalline cubic boron nitride Grain size: 170 - 200 Applications: High-speed steel (HSS)	3100127
Replacement grinding disc Diamond Grain size: 150 Applications: carbides	3100132

Drill bit grinding device with continuous speed control and precise repetition accuracy

Facts that impress in terms of quality, performance and price

- ▶ Solid cast baseplate with high deadweight for low-vibration action
- ▶ Long service life and quiet action thanks to balanced rotor with quality ball bearings
- ▶ Precise repetition accuracy thanks to prism-guided feed
- ▶ Variable speed control option for different materials
- ▶ Angle adjustment possible for all twist drill types
- ▶ Prism holders for precise centring of the workpiece
- ▶ Rubber cap for protection against dust and water
- ▶ Coolant tray and grinding cup included as standard in scope of delivery



Large grinding area

Twist drills from Ø 3 to Ø 20 mm

Grinding cup

- › Self dressing
- › No dressing required



Prism support

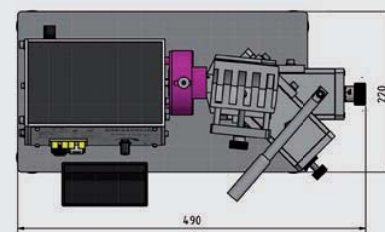
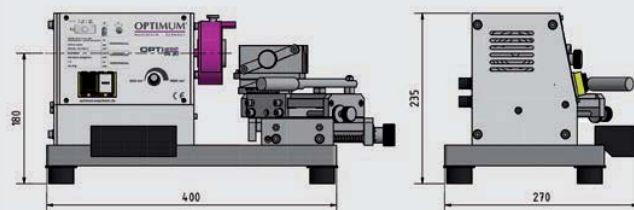
- › Sturdy
- › Precise centring and secure hold

Scope of supply

- › Coolant tray
- › Cup grinding disc, red

Model	DG 20
Article no.	3100020
Technical specifications	
Electrical connection	230 V/1 Ph ~50 Hz
Motor output	600 W
Technical specifications	
Speed (continuously variable)	1 400 - 7 600 rpm
Grinding speed	16 m/s
Grinding capacity drill bits	Ø 3 mm to Ø 20 mm
Tip sharpening angle	90° - 150°
Cup grinding disc	
External Ø	40 mm
Inner Ø	26 mm
Thread Ø	M10
Depth	22 mm
Dimensions	
Length x width x height	490 x 270 x 235 mm
Weight	22.5 kg

Dimensions



Accessories

Cup grinding disc



Article no.

3107120

Cup grinding disc green for carbides



3107121

The handy drill bit grinding device by quantum.

For easy sharpening of twist drill bits from Ø 3 mm to Ø 13 mm

Facts that impress in terms of quality, performance and price

- ▶ Easy to operate for inexpensive grinding of twist drill bits with two cutting edges
- ▶ Drill bit grinding without prior experience - clean, fast and precise
- ▶ Easy to transport
- ▶ Easy replacement of the grinding disc
- ▶ Positively-driven sharpening action, thus easy to operate
- ▶ Automatic grinding of the tip geometry thanks to cam
- ▶ Robust plastic housing with anti-slip base
- ▶ Diamond grinding stone with long service life for the perfect grind



Fig.: GQ-D13

Three steps to a ground drill bit



Adjust the drill bit

- › Twist drills are aligned in projection length and at the correct angle



Sharpening the drill bit

- › Through slight rotation from stop to stop



Tipping the drill bit

- › Again through slight rotation from stop to stop

Scope of supply

- › Diamond grinding disc
- › Collet chuck holder

Model	GQ-D13
Article no.	3140020
Technical data	
Electrical connection	230 V/1 Ph ~50 Hz
Motor output	80 W
Technical specifications	
Speed (continuously variable)	4 200 rpm
Grinding wheel	Ø 78 mm
Grinding capacity drill bits	Ø 3 mm to Ø 13 mm
Dimensions	
Length x width x height	220 x 200 x 160 mm
Weight	2.5 kg

Accessories	Article no.
Replacement grinding disc	3140021
Crystalline cubic boron nitride	
Grain size: 170 - 200	
Applications: High-speed steel (HSS)	

PREMIUM Bench grinding machines

GZ - DD Models with chassis and integrated extraction system

Facts that impress in terms of quality, performance and price

- ▶ **10-year OPTIMUM guarantee***
- ▶ Heavy industrial grinding machine absorbs the vibrations (which are low anyway) thanks to its high deadweight
- ▶ Also suitable for strong thrust force on the grinding discs
- ▶ Maintenance-free, durable, induction motor with smooth action
- ▶ Cast iron housing
- ▶ Spark guard
- ▶ Sturdy, adjustable workpiece support
- ▶ Grinding discs not included in standard scope of delivery
- GZ-DD models:**
 - ▶ Integrated extraction system with aluminium fan and self-cleaning impellers
 - ▶ Dust bag made of self-extinguishing woven material
 - ▶ Sturdy chassis with water tray



Chassis	Article no.
› Without extractor	
GZ 20D	3091120
› L x W x H: 400 x 370 x 760 mm	
› Weight 33 kg	
GZ 25D	3091122
› L x W x H: 460 x 430 x 760 mm	
› Weight 40 kg	
GZ 30D	3091124
› L x W x H: 460 x 430 x 760 mm	
› Weight 52 kg	

Grinding disc	Article no.
› Pure corundum grinding disc	
› Hardness M - grey	
› Made in Italy	
GRINDING DISC GZ 20D/DD	
› Max. speed 3 345 rpm	
K 36	3098121
K 60	3098123
K 80	3098125
GRINDING DISC GZ 25D/DD	
› Max. speed 2 675 rpm	
K 36	3098131
K 60	3098133
K 80	3098135
GRINDING DISC GZ 30D/DD	
› Max. speed 2 230 rpm	
K 36	3098141
K 60	3098143
K 80	3098145

ELECTRONIC BRAKE	Article no.
	3091099

- › Controlled braking
- › Including factory assembly



*"Warranty conditions" on page 253



Fig.: GZ 25DD with optional grinding discs

Model	GZ 20D	GZ 25D	GZ 30D
Article no.	3091010	3091015	3091020
Model	GZ 20DD	GZ 25DD	GZ 30DD
Article no.	3091040	3091045	3091050
Technical data			
Electrical connection	400 V/3 Ph ~50 Hz	400 V/3 Ph ~50 Hz	400 V/3 Ph ~50 Hz
Motor output	750 W	1.1 kW	1.8 kW
Grinding discs			
Dimensions	Ø 200 x 25 mm, Drill hole Ø 20 mm	Ø 250 x 30 mm, Drill hole Ø 25 mm	Ø 300 x 35 mm, Drill hole Ø 30 mm
Speeds	2 800 rpm	1 400 rpm	1 400 rpm
Dimensions			
L x W x H GZ-Models	550 x 290 x 360 mm	670 x 340 x 410 mm	810 x 420 x 560 mm
L x W x H GZ-DD models	800 x 710 x 1 300 mm	800 x 710 x 1 300 mm	810 x 1 200 x 1 300 mm
Weight GZ models	25 kg	44.8 kg	64.5 kg
Weight GZ-DD models	63.7 kg	91 kg	124 kg

Double grinder by OPTIMUM - quality products for trades and industry.

Facts that impress in terms of quality, performance and price

- ▶ Heavy, durable industrial design with maintenance-free motor for continuous use
- ▶ GU housing made of strand cast aluminium
- ▶ Long service life and quiet action thanks to balanced rotor with quality ball bearings
- ▶ Spark guard on each grinding disc reduces flying sparks
- ▶ Viewing glass made of break-proof material
- ▶ Sturdy adjustable workpiece support
- ▶ Vibration-damping rubber feet
- ▶ Coarse and fine grinding disc (K36/K60) included in standard scope of delivery



Fig.: SM 300



Fig.: GU 15 - GU 25

Grinding disc	Article no.
› Normal corundum grinding disc	
› Rough grain 36	
Ø 150 x 20 Ø 16 mm	3107150
Ø 175 x 25 Ø 32 mm	3107180
Ø 200 x 30 Ø 32 mm	3107210
Ø 250 x 40 Ø 32 mm	3107250
Ø 300 x 50 Ø 75 mm	3107270

Grinding disc	Article no.
› Normal corundum grinding disc	
› Fine grain 80	
Ø 150 x 20 Ø 16 mm	3107155
Ø 175 x 25 Ø 32 mm	3107185
Ø 200 x 30 Ø 32 mm	3107215
Ø 250 x 40 Ø 32 mm	3107255
Ø 300 x 50 Ø 75 mm	3107275

Accessories

„Machine bases“ on page 234



Scope of supply

- › Grinding disc - normal corundum coarse 36 grain
- › Grinding disc - normal corundum fine 80 grain

Model	GU 15	GU 18	GU 20	GU 25	SM 300
Article no. (230 V)	3101505	3101510	3101515	-	-
Article no. (400 V)	-	-	3101520	3101525	3101303
Technical specifications					
Electrical connection	230 V/1 Ph ~50 Hz	230 V/1 Ph ~50 Hz	230 V / 400 V	400 V/3 Ph ~50 Hz	400 V/3 Ph ~50 Hz
Motor output	450 W	450 W	600 W	1.5 kW	2.2 kW
Grinding discs					
Dimensions	Ø 150 x 20 mm Drill hole Ø 16 mm	Ø 175 x 25 mm Drill hole Ø 32 mm	Ø 200 x 30 mm Drill hole Ø 32 mm	Ø 250 x 40 mm Drill hole Ø 32 mm	Ø 300 x 50 mm Drill hole Ø 75 mm
Speeds	2 850 rpm	2 850 rpm	2 850 rpm	2 850 rpm	1 450 rpm
Extraction duct nominal width	Ø 34 mm	Ø 34 mm	Ø 34 mm	Ø 34 mm	Ø 35 mm / Ø 45 mm
Dimensions					
Length x width x height	389 x 205 x 265 mm	389 x 235 x 280 mm	495 x 260 x 330 mm	471 x 320 x 365 mm	680 x 375 x 394 mm
Weight	11 kg	14 kg	19 kg	33 kg	50 kg

Vario drive with Siemens inverter drive for PREMIUM grinders.

OPTION 1

Vario drive includes:

- ▶ Chassis with coolant tray
- ▶ Dimensions L x W x H: 400 x 370 x 760 mm
- ▶ **With Siemens inverter**
- ▶ Without grinder. This must be ordered separately along with your order

▶ Siemens inverter 0.75 kW
› PREMIUM double grinder GZ 20D
› PREMIUM combined grinding machine GZ 20C
▶ Siemens inverter 1.5 kW
› PREMIUM double grinder GZ 25D
› PREMIUM combined grinding machine GZ 25C

Description GZ 20C and GZ 25C see page 226

Description GZ 20C and GZ 25C see page 226

OPTION 2

Vario drive:

Grinder with chassis is converted to Vario

- ▶ **With Siemens inverter**
- ▶ Without grinder. This must be ordered separately along with your order

▶ Siemens inverter 0.75 kW
› PREMIUM double grinder GZ 20DD
› PREMIUM combined grinding machine GZ 20D/C
▶ Siemens inverter 1.5 kW
› PREMIUM double grinder GZ 25DD
› PREMIUM combined grinding machine GZ 25D/C

Description GZ 20D/C and GZ 25D/C see page 226

Description GZ 20DD and GZ 25DD see page 226

Circumferential speeds

- › GZ 25 controllable from 19 m/s to 3 m/s
- › GZ 20 controllable from 30 m/s to 5 m/s



Fig. Vario drive option 1
Figure with optional grinder



Fig. Vario drive option 2
Chassis with extraction unit
Figure with optional grinder

Vario drive	OPTION 1
	With chassis
Motor output up to 0.75 kW	3010330
Motor output up to 1.5 kW	3010332

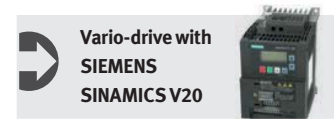
Without grinder - must be ordered separately along with your order

Note Vario drive can only be ordered ex works. Cannot be retrofitted

Vario drive	OPTION 2
Motor output up to 0.75 kW	3010340
Motor output up to 1.5 kW	3010342

Without grinder - must be ordered separately along with your order

Vario drive with Siemens inverter drive Sinamics V20 makes it possible to steplessly control the speed of the grinder



Vario drive with chassis GU 1

Facts that impress in terms of quality, performance and price

- ▶ Cyclone vacuum integrated in chassis, consequently less space required
- ▶ Noise-insulated
- ▶ Lamp holder for LED 3-500
- ▶ Dimensions L x W x H: 477 (550) x 340 x 805 (890) mm
- ▶ **With Siemens inverter**



Automatic start-up GU 1

When switching on and switching off the external device, the suction will start or stop automatically with a delay of 2-3 seconds. The additional activation or deactivation of the extraction is eliminated. The residual dust is sucked off after switching off the machine according to the Hazardous Substances Ordinance

Abb. GU 1 chassis with optional accessories



Vario drive with chassis GU 3

- ▶ with coolant tray
- ▶ Dimensions L x W x H: 320 x 270 x 820 mm
- ▶ **Mit Siemens Inverter**

Abb. GU 3 chassis with optional accessories



NEU

	Siemens Inverter 0,75 kW	Siemens Inverter 1,5 kW
Vario-drive with chassis GU 1		
Art. no.	3010320	3010322
Vario-drive with chassis GU 3		
Art. no.	3010314	3010316
Without grinder - must be ordered separately along with your order.		
Circumferential speed	30 m/s to 5 m/sec variable	37 m/s to 6 m/sec variable
Required machines		
Combined grinding machine	› GU 20B	› GU 25B
Universal grinding machine	› GU 20S	› GU 25S
Bench grinder	› GU 20	› GU 25
› Polishing grinder	› GU 20P	› GU 25P

PREMIUM Combined grinding machines for workshops, steel construction companies,... GZ - CD Models with chassis and integrated extraction system



Facts that impress in terms of quality, performance and price

- ▶ **10-year OPTIMUM guarantee***
- ▶ Heavy industrial combined grinding machine absorbs the vibrations (which are low anyway) thanks to its high deadweight
- ▶ Also suitable for strong thrust force on the grinding disc and brush
- ▶ Maintenance-free, durable, induction motor with smooth action
- ▶ Cast iron housing
- ▶ Sturdy, adjustable workpiece support
- ▶ Grinding disc and brush not included in standard scope of delivery



Fig.: GZ 20C with optional grinding disc and brush



Fig.: Chassis and integrated extraction system

Multi-purpose wire brush
 › High tensile steel wire available as an accessory in various thicknesses

Brush protection housing
 › Swivelling
 › Extraction duct for attaching an extraction unit

Chassis	Article no.
› Without extractor	
GZ 20C	3091120
› L x W x H: 400 x 370 x 760 mm	
› Weight 33 kg	
GZ 25C	3091122
› L x W x H: 460 x 430 x 760 mm	
› Weight 40 kg	



Grinding disc	Article no.
› Pure corundum grinding disc	
› Hardness M - white	
› Made in EU	
GZ 20C/GZ 20CD	
K 36	3098121
K 60	3098123
K 80	3098125
GZ 25C/GZ 25CD	
K 36	3098131
K 60	3098133
K 80	3098135

Round brush	Article no.
› High tensile steel wire	
› Made in EU	
GZ 20C/GZ 20CD	
0.35 mm	3098081
0.5 mm	3098082
GZ 25C/GZ 25CD	
0.3 mm	3098086
0.5 mm	3098087

ELECTRONIC BRAKE	Article no.
	3091099

- › Controlled braking
- › Including factory assembly



Model	GZ 20C	GZ 25C
Article no.	3091070	3091075
Model	GZ 20CD	GZ 25CD
Article no.	3091080	3091085
Technical data		
Electrical connection	400 V/3 Ph ~50 Hz	400 V/3 Ph ~50 Hz
Motor output	750 W	1.1 kW
Grinding discs		
Dimensions	Ø 200 x 25 mm, bore Ø 20 mm	Ø 250 x 30 mm, bore Ø 25 mm
Speeds	2 800 rpm	1 400 rpm
Dimensions		
L x W x H GZ-Models	650 x 300 x 360 mm	850 x 340 x 410 mm
L x W x H GZ-CD models	900 x 710 x 1 300 mm	850 x 1 200 x 1 300 mm
Weight GZ-C models	26.5 kg	40.7 kg
Weight GZ-CD models	65 kg	87 kg

*"Warranty conditions" on page 253

Polishing machines for surface machining of metal workpieces

Facts that impress in terms of quality, performance and price

- Heavy, durable industrial design with maintenance-free motor
- Housing made of strand cast aluminium
- Long service life and quiet action thanks to balanced rotor with quality ball bearings
- Vibration-damping rubber feet
- Two wide polishing discs included in standard scope of delivery



Fig.: GU 20P

Polishing disc	Article no.
----------------	-------------

> hard	
Ø 200 x 20 Ø 16 mm	3107321
Ø 250 x 25 Ø 20 mm	3107331



Polishing disc	Article no.
----------------	-------------

> soft	
Ø 200 x 20 Ø 16 mm	3107320
Ø 250 x 25 Ø 20 mm	3107330



Model	GU 20P	GU 25P
Article no. (230 V)	3101540	-
Article no. (400 V)	3101545	3101550
Technical data		
Electrical connection	230 V / 1 Ph or 400 V / 3 Ph	400 V/3 Ph ~50 Hz
Motor output	600 W	1.5 kW
Rotational speed	2 850 rpm	2 850 rpm
Polishing disc size	Ø 200 x 20 mm	Ø 250 x 25 mm
Dimensions L x W x H	545 x 200 x 262 mm	555 x 250 x 296 mm
Weight	10.6 kg	17.4 kg

Accessories

„Machine bases“ on page 234



Combined grinding machines by Optimum for workshops

Facts that impress in terms of quality, performance and price

- Durable design with maintenance-free motor for continuous use
- Housing made of strand cast aluminium
- Large, heavy fastening flanges ensure excellent disc concentricity
- Grinding attachment with graphite support - prevents friction and heat
- Stop allows for fast and convenient initial grinding of the workpieces
- Swivelling brush protection housing
- Extraction duct for attaching an extraction unit



Multi-purpose wire brush
 ► High tensile steel wire

Grinding disc	Article no.
► Normal corundum grinding disc	
► Rough grain 36	
Ø 150 x 20 Ø 16 mm	3107150
Ø 175 x 25 Ø 32 mm	3107180
Ø 200 x 30 Ø 32 mm	3107210
Ø 250 x 40 Ø 32 mm	3107250

Grinding disc	Article no.
► Normal corundum grinding disc	
► Fine grain 80	
Ø 150 x 20 Ø 16 mm	3107155
Ø 175 x 25 Ø 32 mm	3107185
Ø 200 x 30 Ø 32 mm	3107215
Ø 250 x 40 Ø 32 mm	3107255

Multi-purpose wire brush	Article no.
► Thickness 0.3 mm	
Ø 150 x 20 Ø 16 mm	3107425
Ø 175 x 20 Ø 32 mm	3107430
Ø 200 x 20 Ø 32 mm	3107435
Ø 250 x 20 Ø 32 mm	3107440

Accessories for machine bases
„Machine bases“ on page 234

Scope of supply
► Grinding disc - normal corundum coarse 36 grain
► Multi-purpose wire brush, wire thickness 0.3 mm

Model	GU 15B	GU 18B	GU 20B	GU 25B
Article no. (230 V)	3101600	3101605	3101610	-
Article no. (400 V)	-	-	3101615	3101620
Technical specifications				
Electrical connection	230 V/1 Ph ~50 Hz	230 V/1 Ph ~50 Hz	230 V / 400 V	400 V/3 Ph ~50 Hz
Motor output	450 W	450 W	600 W	1.5 kW
Dimensions				
Grinding discs	Ø 150 x 20 mm Drill hole Ø 16 mm	Ø 175 x 25 mm Drill hole Ø 32 mm	Ø 200 x 30 mm Drill hole Ø 32 mm	Ø 250 x 40 mm Drill hole Ø 32 mm
Multi-purpose wire brush	Ø 150 x 20 mm Drill hole Ø 16 mm	Ø 175 x 20 mm Drill hole Ø 32 mm	Ø 200 x 20 mm Drill hole Ø 32 mm	Ø 250 x 20 mm Drill hole Ø 32 mm
Speeds	2 850 rpm	2 850 rpm	2 850 rpm	2 850 rpm
Dimensions				
Length x width x height	495 x 305 x 305 mm	495 x 305 x 305 mm	580 x 345 x 335 mm	650 x 380 x 385 mm
Weight	11 kg	13 kg	17 kg	30 kg

Functional universal grinding machines with grinding attachment

Facts that impress in terms of quality, performance and price

- ▶ Rugged and sturdy universal grinding machines with grinding belt and grinding disc for a variety of materials
- ▶ Heavy, durable industrial design with maintenance-free motor for continuous use
- ▶ Housing made of strand cast aluminium
- ▶ Large, heavy fastening flanges ensure excellent disc concentricity
- ▶ Grinding attachment with graphite support; prevents friction and heat
- ▶ Stop allows for fast and convenient initial grinding of the workpieces
- ▶ Belt run adjustment without tools - adjustable using a single star knob
- ▶ Universal corundum grinding disc and grinding belt included in standard scope of delivery



Fig.: GU 20S

- Workpiece support**
- ▶ Sturdy
 - ▶ Adjustable

Model	GU 20S	GU 25S
Article no. (230 V)	3101570	-
Article no. (400 V)	3101575	3101580
Technical specifications		
Electrical connection	230 V or 400V ~50 Hz	400 V/3 Ph ~50 Hz
Motor output	600 W	1.5 KW
Grinding discs		
Grinding disc size	Ø 200 x 30 mm Drill hole Ø 32 mm	Ø 250 x 40 mm Drill hole Ø 32 mm
Grinding attachment		
Grinding belt length, width	75 x 762 mm	75 x 1 016 mm
Grinding attachment swivel range	90°	90°
Extraction duct nominal width	Ø 32 mm	Ø 32 mm
Grinding support	87 x 180 mm	87 x 305 mm
Rotational speed	2 850 rpm	2 850 rpm
Dimensions L x W x H		
Weight	20.7 kg	31.5 kg

Grinding disc	Article no.
▶ Normal corundum grinding disc	
▶ Rough grain 36	
Ø 200 x 30 Ø 32 mm	3107210
Ø 250 x 40 Ø 32 mm	3107250

Grinding disc	Article no.
▶ Normal corundum grinding disc	
▶ Fine grain 80	
Ø 200 x 30 Ø 32 mm	3107215
Ø 250 x 40 Ø 32 mm	3107255

Grinding belt	PQ	Article no.
▶ For GU 20S		
▶ Sanding belt size 75 x 762		
Grain size 40	5 pcs.	3357612
Grain size 40	5 pcs.	3357614
Grain size 80	5 pcs.	3357616
Grain size 120	5 pcs.	3357618
Grain size 180	5 pcs.	3357619
Grain size 240	5 pcs.	3357620

Grinding belt	PQ	Article no.
▶ For GU 25S		
▶ Sanding belt size 75 x 1 016		
Grain size 40	5 pcs.	3357682
Grain size 40	5 pcs.	3357684
Grain size 80	5 pcs.	3357686
Grain size 120	5 pcs.	3357688
Grain size 180	5 pcs.	3357689
Grain size 240	5 pcs.	3357690

Accessories for machine bases

„Machine bases“ on page 234



Scope of supply

- ▶ Grinding disc normal corundum fine 80 grain
- ▶ Grinding belt normal corundum fine 80 grain

GU 1 - Machine chassis with cyclone extractor for grinding machines

Facts that impress in terms of quality, performance and price

- ▶ Sturdy chassis
- ▶ Cyclone vacuum integrated in chassis, consequently less space required
- ▶ For GU and GU-S machines
- ▶ Noise-insulated
- ▶ Without drilled holes - must be drilled individually
- ▶ Y adapter for two-tube extraction unit connection, Ø 30 mm and Ø 35 mm



Lamp holder

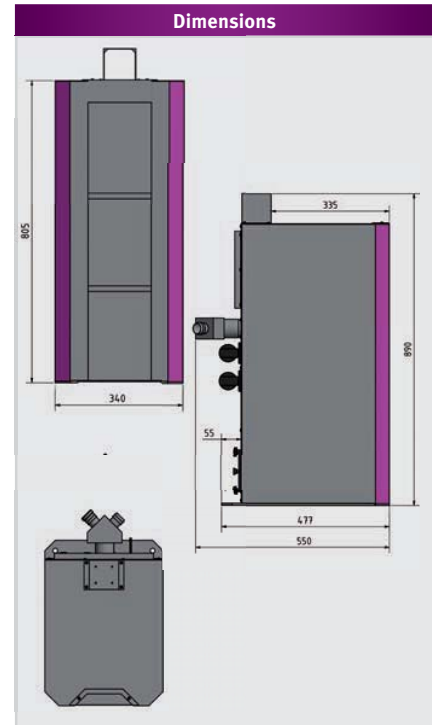
- ▶ prepared for machine lamp LED 3-500

Model	GU 1	
Article no.	3107110	3107109
Elec. connection	230 V / 1 Ph	400 V / 3 Ph
Motor output	1.3 kW	
Rotational speed	29 000 rpm	
Air throughput	2.3 m³ per minute	
Dimensions	477 (550) x 340 x 805 (890) mm	
Weight	44 kg	

Note: The extraction unit needs a neutral conductor, 400-V version



Fig. with optional grinder and extraction tubes



Extraction hose

3107111

- 2 flexible extraction hoses for GU and GU-S grinders



Automatic start-up GU 1 and GU 2

When the external device is switched on, the extraction unit automatically starts up after a delay of 2-3 seconds. No need to additionally switch the extraction unit on or off: the residual dust is extracted after switching off the machine in line with the Hazardous Materials Ordinance

GU 2 - Machine chassis with extraction unit for OPTIMUM machines such as the BSM or external machines

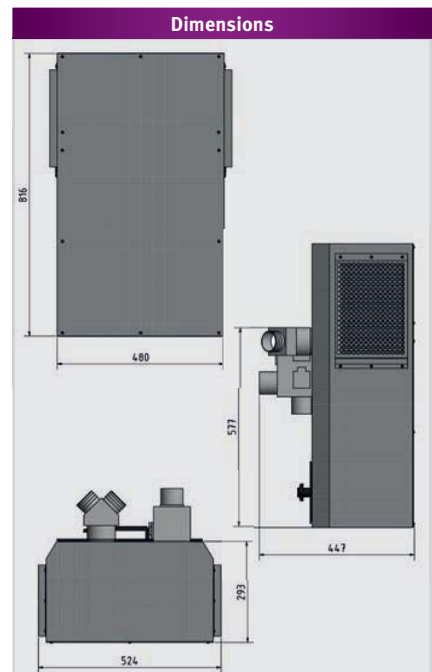
Facts that impress in terms of quality, performance and price

- ▶ Cyclone extraction unit with two motors
- ▶ Includes Y adapter for two-tube extraction unit connection, 60 x 300-1000 mm flexible
- ▶ Small footprint
- ▶ Noise-insulated
- ▶ External 230V continuous supply

Model	GU 2
Article no.	3107115
Elec. connection	400 V / 3 Ph
Total connected load	4 kW
Motor output per blower	1.3 kW
Number of blowers	2
Rotational speed	29 000 rpm
Air throughput	4.6 m³ per minute
Chip filter container volume	15 litres
Dimensions L x W x H	525 x 440 x 815 mm
Weight	60 kg



Chip drawer



Extraction hose

3107116

- 2 pcs. flexible extraction tube Ø 60 mm
- Length 300 - 1000 mm

The chassis GU 1 and GU 2 comply with the DIN EN 55011 standard: class C2.

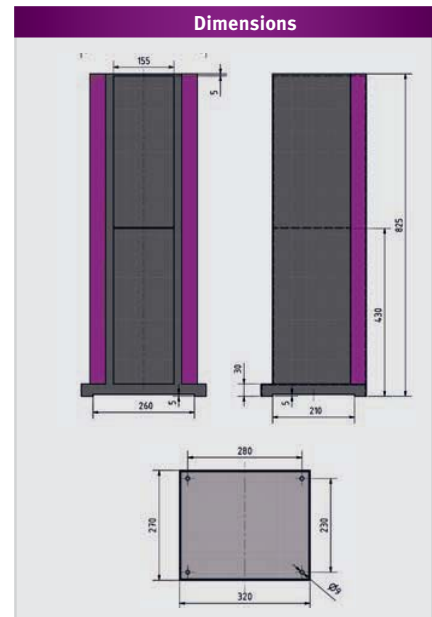
Note: The extraction unit needs a neutral conductor

GU 3 - Machine chassis

Facts that impress in terms of quality, performance and price

- ▶ Coolant tray
- ▶ Small footprint
- ▶ Specially suited for our machines
 - › Bench grinders GU 15 - GU 25
 - › Universal grinding machines GU 20S and 25S
 - › Combined sander GU 15B - GU 25B
 - › Polishing machines GU 20P and GU 25P

Model	GU 3
Article no.	3107118
Dimensions	320 x 270 x 825 mm
Weight	14.5 kg



Machine chassis

Facts that impress in terms of quality, performance and price

- ▶ Closed chassis
- ▶ Solid design
- ▶ Specially suited for our machines
 - › Bench grinders SM 300

Model	Chassis
Article no.	3107103
Dimensions	505 x 600 x 790 mm
Weight	23 kg



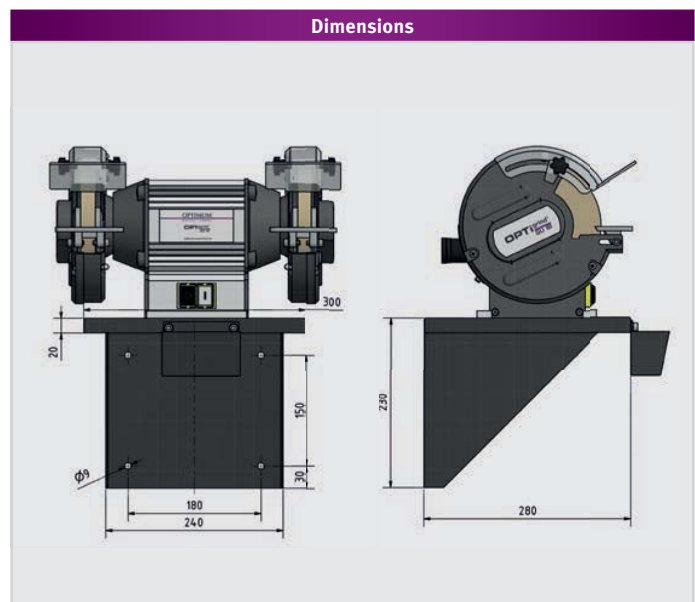
Wall holder

Facts that impress in terms of quality, performance and price

- ▶ Coolant tray
- ▶ L x W x H: 332 x 300 x 230 mm
- ▶ Specially suited for our machines
 - › Bench grinders GU 15 - GU 25
 - › Universal grinding machines GU 20S and 25S
 - › Combined sander GU 15B - GU 25B
 - › Polishing machines GU 20P and GU 25P



Model	Wall holder
Article no.	3107050



Heavy and rugged industrial design belt grinding machine for roughing, finishing and profile grinding of various materials in continuous operations

Facts that impress in terms of quality, performance and price

- ▶ Time-saving deburring of edges and weld polishing
- ▶ Sturdy and vibration-free design
- ▶ Powerful motor
- ▶ Grinding table pivots through 15° - 30°
- ▶ Continuously adjustable top stop supports fast and convenient initial grinding of workpieces
- ▶ Large flat grinding surface
- ▶ Adjustable stops for universal deployment
- ▶ Operating tools in practical holder
- ▶ Additional safety device
- ▶ Fast belt running speed of 33 m/sec. for fast material removal
- ▶ Extraction duct front and rear for attaching an extraction unit
- ▶ Spark guard
- ▶ Workpiece support with adjustable tilt angle allows grinding at the required angle
- ▶ One grinding belt included in standard scope of delivery



Flat grinding surface

- › Open throughout and to rear
- › Also perfectly suited for machining longer workpieces



Rollers

- › Rubberised
- › Quiet action
- › Prevents the belt slipping



Fig.: BSM 150



Workpiece support

Article no.

- › Continuously adjustable; supports fast initial grinding

For BSM 75	3357881
For BSM 150	3357891



Grinding belts BSM 75*

Article no.

PQ

Grain size 40	3357642	5 units
Grain size 40	3357644	5 units
Grain size 80	3357646	5 units
Grain size 120	3357648	5 units
Grain size 180	3357649	5 units
Grain size 240	3357650	5 units

Sanding belts BSM 150

Article no.

PQ

Grain size 40	3357672	5 units
Grain size 40	3357674	5 units
Grain size 80	3357676	5 units
Grain size 120	3357678	5 units
Grain size 180	3357679	5 units
Grain size 240	3357680	5 units



Model	BSM 75	BSM 150
Article no.	3321075	3321150
Technical data		
Electrical connection	400 V/3 Ph ~50 Hz	400 V/3 Ph ~50 Hz
Motor output	3 kW	4 kW
Speeds		
Rotational speed	3 000 rpm	3 000 rpm
Cumferential belt speed	33 m/sec.	33 m/sec.
Grinding belt		
Grinding belt dimensions	75 x 2 000 mm	150 x 2 000 mm
Dimensions		
Extraction duct nominal width inside	Ø 57 mm	Ø 57 mm
Extraction duct nominal width outside	Ø 60 mm	Ø 60 mm
Dimensions length x width	500 x 995 mm	575 x 995 mm
Height: Bottom pivot bearing	1 045 mm	1 045 mm
Height: Top pivot bearing	1 135 mm	1 135 mm
Weight	98 kg	125 kg

Scope of supply

- › Grinding belt 60 grain
- › Allen key

Universally deployable belt and disc grinding machine with swivelling grinding arm for deburring, surface and profile grinding

Facts that impress in terms of quality, performance and price

- ▶ Powerful motor
- ▶ Pneumatic sanding belt tension manually adjustable
- ▶ Easily replaceable grinding belt
- ▶ Fine adjustment for parallel belt run
- ▶ Pivoting grinding table, adjustable via clamping lever
- ▶ Extraction port
- ▶ Delivered with grinding sheet bonded onto grinding disc
- ▶ The hook and loop fastener pad and grinding discs available as accessories offer good adhesion and easy replacement

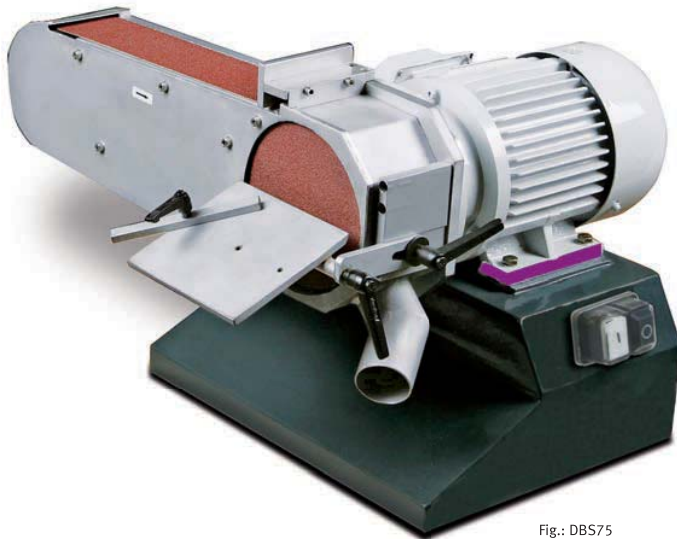


Fig.: DBS75

Scope of supply

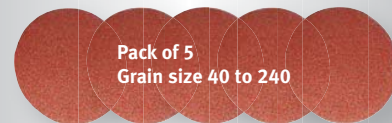
- › Grinding belt 60 grain
- › Grinding sheet 60 grain

Model	DBS 75
Article no.	3311075
Technical specifications	
Electrical connection	400 V/3 Ph ~50 Hz
Motor output	1.1 kW
Rotational speed	1 410 rpm
Belt running speed	11 m/sec.
Dimensions	
Grinding belt dimensions	75 x 1 180 mm
Grinding disc dimensions	Ø 150 mm
Extraction duct nominal width inside	Ø 47 mm
Extraction duct nominal width outside	Ø 50 mm
Grinding support	85 x 215 mm
Swivel range belt grinding table	90°
Length x width x height	665 x 560 x 405 (765) mm
Weight	68 kg

Grinding belt	Article no.	PQ
› Size: 75 x 1 180 mm		
Grain size 40	3357622	5 units
Grain size 40	3357624	5 units
Grain size 80	3357626	5 units
Grain size 120	3357628	5 units
Grain size 180	3357629	5 units
Grain size 240	3357630	5 units

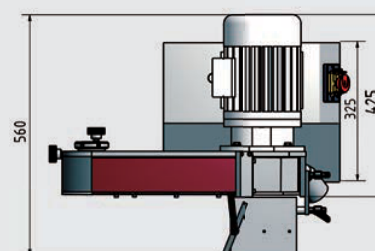
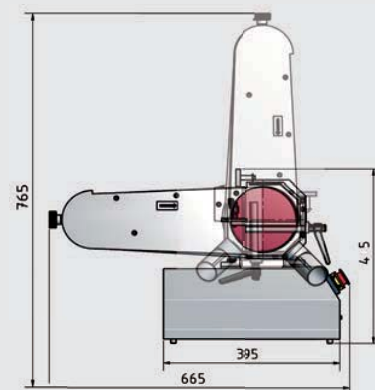


Grinding sheet	Article no.	PQ
› Size: Ø 150 mm		
Grain size 40	3357832	5 units
Grain size 40	3357834	5 units
Grain size 80	3357836	5 units
Grain size 120	3357838	5 units
Grain size 180	3357839	5 units
Grain size 240	3357840	5 units



Hook and loop disc	3357802
› For the grinding disc. Good grinding disc adhesion, easy replacement	

Dimensions



Disc grinder for machining metal surfaces

Facts that impress in terms of quality, performance and price

- Versatile areas of application:
- For roughing, fine and moulding grinding work
- Sturdy and stable machine body
- Balanced aluminium grinding disc for smooth action
- Powerful motor
- Delivered with grinding sheet bonded onto grinding disc



Fig.: TS 305



- › Factory standard extraction duct with two diameters for attaching an extraction unit
- › Outside nominal width $\pm \varnothing 30 / \varnothing 38$ mm



- › Factory standard mitre stop pivots up to $\pm 60^\circ$
- › Grinding table pivots up to $\pm 45^\circ$



- › Hook and loop fastener pad for grinding disc available as optional accessory. Good grinding disc adhesion, easy replacement

Scope of supply

- › Adjustable angle stop
- › Grinding sheet

Model	TS 305
Article no.	3310305
Technical specifications	
Electrical connection	230 V/1 Ph ~50 Hz
Motor output	900 W
General instructions	
Grinding disc	$\varnothing 305$ mm
Rotational speed	1 420 rpm
Table support	155 x 440 mm
Adjustment of angle stop	$\pm 60^\circ$
Pivoting grinding table	$\pm 45^\circ$
Dimensions	
Length x width x height	440 x 445 x 365 mm
Weight	30 kg

Accessories	Article no.	
Hook and loop fastener pad	3357801	
Grinding sheets	Article no.	PQ
› Hook and loop fastener		
Grain size 40	3357854	5 units
Grain size 40	3357856	5 units
Grain size 80	3357858	5 units
Grain size 100	3357860	5 units
Grain size 120	3357862	5 units
Grain size 150	3357865	5 units
Grain size 180	3357866	5 units
Grain size 240	3357867	5 units



Please note

- › These offers are intended exclusively for business owners, retailers and tradespersons who are making a purchase in pursuit of their profession or self-employment. This is an explicit CONDITION FOR THE CONCLUSION OF A CONTRACT. Consumers are not eligible to purchase as per Section 13 BGB (German Civil Code)
- › We accept no liability for printing errors, mistakes or incorrect representation.
- › Subject to technical modifications and visual changes.
- › Illustrations show optimal accessories in some cases
- › Delivery is effected solely on the basis of our terms of delivery and payment.
- › The machines are delivered partly knocked down for transportation reasons.
- › All items are sold through specialist retailers.
- › The goods shall remain our property until payment has been received in full.
- › Our retention of title shall remain valid in case of sale to a third-party.
- › Legal warranty conditions apply for businesses.
- › Copying and reproduction in full or in part is subject to written approval by us.
- › Please note that transport packaging surcharges apply for some machines in this catalogue to cover transport units, packaging and packaging overheads.

Warranty conditions

- › Independently of your legal warranty entitlement, OPTIMUM provides a guarantee on the basis of the following provisions for the period as stated in the catalogue for the respective machine; the guarantee period starts on the date of sale of the machine to the end customer. OPTIMUM offers a guarantee on catalogue products where a guarantee is specifically indicated. The guarantee exclusively covers defects resulting from material or manufacturing errors. The warranty exclusively covers spare parts but not the transport and installation costs or labour and ancillary services necessary for eliminating defects. The guarantee excludes unintended use or improper application such as overloading of the machine or the use of non-approved and unsuitable tools, use of force, damage caused by external influences or by foreign bodies, e.g., dust, chips or stones, damage caused by failure to observe the Operating Instructions, e.g., connection to the wrong mains voltage or current, failure to observe assembly instructions, conversions and extensions carried out by the customer, as well as normal wear. The guarantee also excludes partially or fully disassembled machines and machine tools. When claiming against guarantee/warranty, you must submit the original sales receipt showing the date of purchase. Repairs under guarantee/warranty may be performed by authorised partners only who will be named by the guarantee/warranty provider. The guarantee/warranty is restricted to the end customer of the new machine and is not transferrable.

General notes on operating our machines

- › Our machines must be supervised at all times during operation. Leaving the machine during operations constitutes gross negligence.
- › The details on machine precision are found in the technical data of the catalogue pages. If you do not find any values here, please contact info@optimum-maschinen.de for more detailed information.
- › The stated precisions are achieved under standardised conditions (correct installation of the machine and ambient temperature of 20 °C). The machines are not designed for continuous operation.
- › Please note that operators are required to make conversions in the event of installing third-party chucks or flanged chucks to reach the stated, technically possible rotating diameter.

Operation of machines with frequency converters

› Electrical connection only by a qualified electrician

Machines with frequency inverters or inverters must not be operated via an ordinary plug. A permanent connection is required. The drive components conduct a high leakage current via the protective conductor. Touching conductive parts when the protective conductor is interrupted can result in death or serious injury.

› Building electrics:

In order to avoid tripping of residual current circuit breakers - if present in the building electrics - an all-current-sensitive residual current circuit breaker type B is required.

AC - sensitive AC type RCDs (AC only) are not suitable for frequency inverters. AC sensitive earth-leakage circuit breakers of type AC are no longer in use and are no longer permitted in Germany.

YOU WILL FIND MORE PRODUCTS IN OUR MAIN CATALOGUES



optimum-machines.com



holzkraft-machines.com
holzstar.com



metallkraft-machines.com



cleancraft.eu



schweisskraft.com



en.uncraft.de



aircraft-compressors.com

Sales Germany:

OPTIMUM Maschinen Germany GmbH
Dr. Robert-Pfleger-Str. 26
96103 Hallstadt/Germany

Phone: +49 (0) 9 51 - 96 555 - 0

Fax: +49 (0) 9 51 - 96 555-888

e-Mail: info@optimum-maschinen.de



www.optimum-machines.com

Sales Austria:

AIRCRAFT Kompressorenbau und
Maschinengroßhandel GmbH
Gewerbestraße Ost 6

4921 Hohenzell / Austria

Phone: +43 (0) 77 52 - 70 929 - 0

Fax: +43 (0) 77 52 - 70 929 - 99

e-Mail: info@aircraft.at

Web: www.aircraft-compressors.com

DISCOVER OUR PRODUCT VIDEOS NOW!



Optimum Machines



Are you familiar with our YouTube channel, Optimum Machines?

You can view all of our product videos here. We always seek to offer you a wide range and high quality selection of videos.

Subscribe to our YouTube channel, to avoid missing any of the new videos:
www.youtube.com/user/OptimumMaschinen

Your specialist retailer:



OPTIMUM Cap
Part no. 9000072